

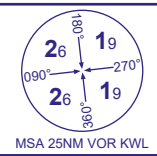
INSTRUMENT APPROACH CHART - ICAO

KIRKWALL

DIRECT ARRIVALS

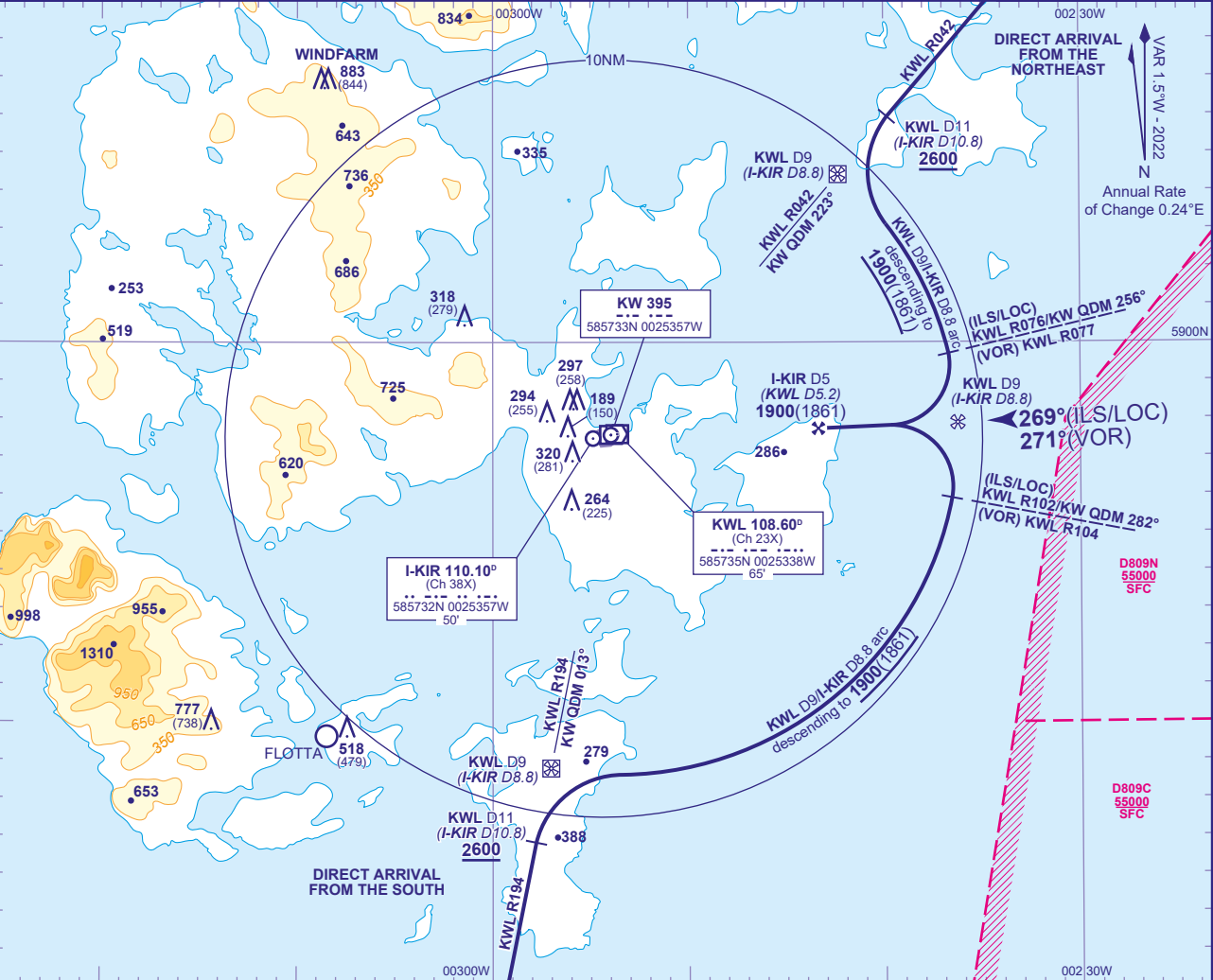
RWY 27

(ACFT CAT A,B,C)



APP	118.305	KIRKWALL APPROACH	AD ELEVATION	58
TWR	118.305	KIRKWALL TOWER	THR ELEVATION	39
AFIS	118.305	KIRKWALL INFORMATION	OBSTACLE ELEVATION	883 AMSL (844) (ABOVE THR)
ATIS	108.600	KIRKWALL INFORMATION	BEARINGS ARE MAGNETIC	

TRANSITION ALTITUDE	3000
---------------------	------



ARRIVING FROM THE NORTHEAST
Arrival **not below MSA**. Request ATC approval for DME arc arrival when within 40NM of Kirkwall. Intercept and establish NDB(L) KW QDM 223° inbound, or VOR DME KWL R042 **not below minimum enroute altitude**. After passing KWL DME 25 (I-KIR DME 24.5) inbound, subject to ATC approval, descend as required **not below 2600**. From KWL DME 11 (I-KIR DME 10.8) turn left to establish on KWL DME 9 (I-KIR DME 8.8) arc clockwise, (IAF on NDB(L) KW QDM 223° (VOR KWL R042) at I-KIR DME 8.8 (KWL DME 9)). When established, descend along the arc to **1900(1861)**. From VOR KWL R076 (NDB(L) KW QDM 256°) (ILS/LOC) or VOR KWL R077 (VOR) turn right onto LOC/extended FAT. When established, from FAF KWL DME 5.2 (I-KIR DME 5) at **1900(1861)**, continue with appropriate final approach procedure.

ARRIVING FROM THE SOUTH AND ON N560 NORTH BOUND
Arrival **not below MSA**. Request ATC approval for DME arc arrival when within 40NM of Kirkwall. Intercept and establish NDB(L) KW QDM 013° inbound, or VOR DME KWL R194 (N560) **not below minimum enroute altitude**. After passing KWL DME 15 (I-KIR DME 14.8) inbound, subject to ATC approval, descend as required **not below 2600**. From KWL DME 11 (I-KIR DME 10.8) turn right to establish on KWL DME 9 (I-KIR DME 8.8) arc anticlockwise, (IAF on NDB(L) KW QDM 013° (VOR KWL R194) at I-KIR DME 8.8 (KWL DME 9)). When established, descend along the arc to **1900(1861)**. From VOR KWL R102 (NDB(L) KW QDM 282°) (ILS/LOC) or VOR KWL R104 (VOR) turn left onto LOC/extended FAT. When established, from FAF KWL DME 5.2 (I-KIR DME 5) at **1900(1861)**, continue with appropriate final approach procedure.

CHANGE (8/21): I-KIR DME ELEVATION. MAG VAR. MAG TRACKS. OBSTACLES.